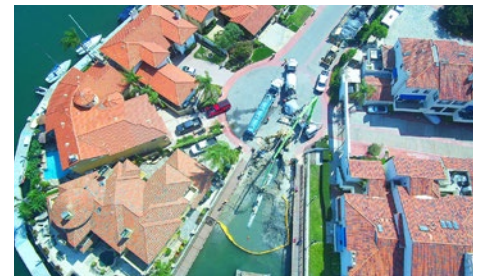
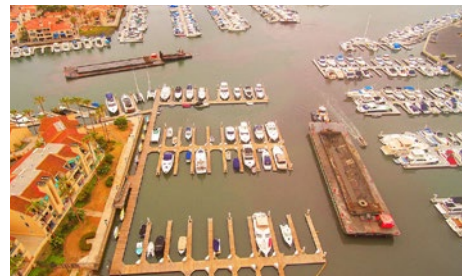


# Sunset / Huntington Harbor

## Maintenance Dredging & Waterline Installation



**In 2016 Curtin Maritime removed 185,000 yards from the Sunset and Huntington Harbors. The project, contracted by the County of Orange had two major goals.**

**(1)** Level the height of the sea floor making the navigable channels safer for the thousands of resident boaters and visitors who utilize those waterways.

**(2)** Use some of the removed material to replenish the salt marsh in the Seal Beach National Wildlife Refuge. This phase of the project, managed by the U.S. Fish and Wildlife Service, raised the elevation of the salt marsh 6-10 inches over 10 acres, improving the habitat quality for the endangered Light-footed Ridgeway Rail.

While operating in Huntington Harbor, the city of Huntington Beach decided to utilize our mobilized dredge fleet to install a much needed 670 feet of 16" HDPW waterline between two of the cities residential islands. The pipeline now improves water redundancy and fire flow protection to Trinidad Island.