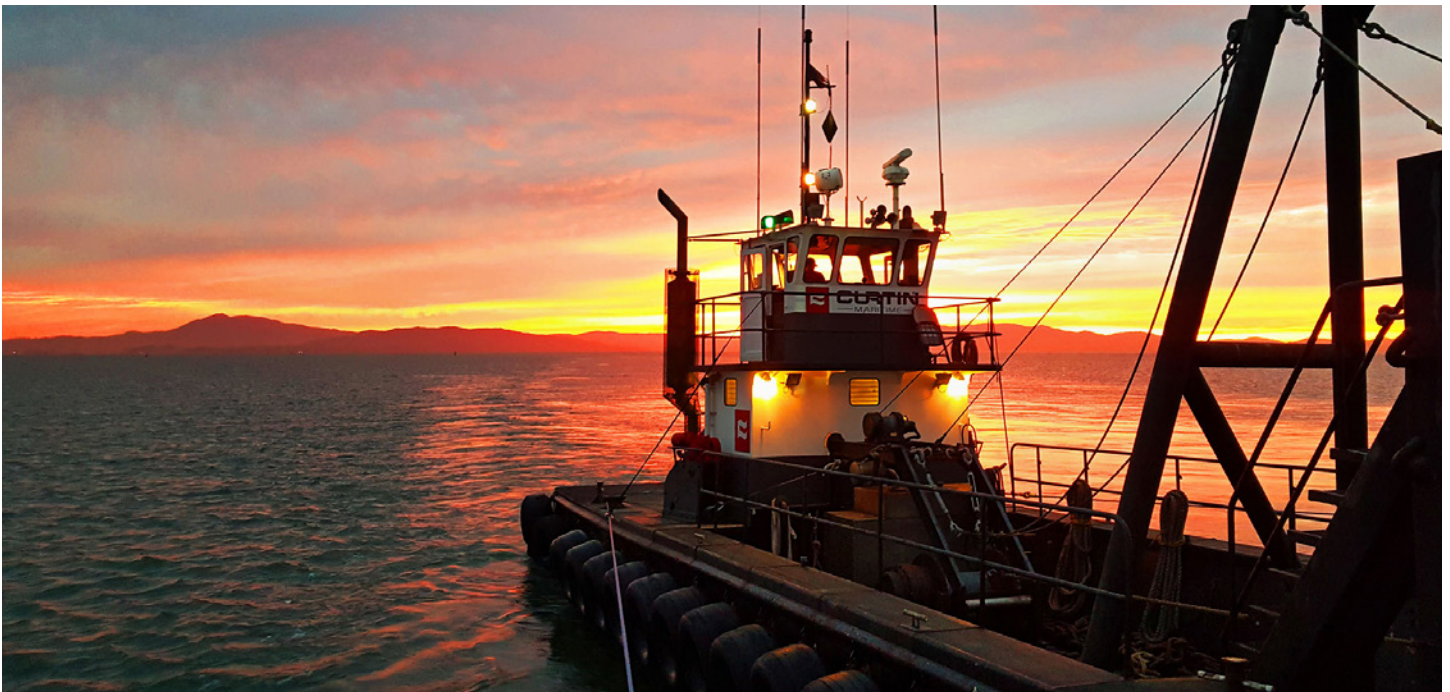


Pinhole Maintenance Dredging

Pinole Shoal Navigational Channel and Suisun Bay in Contra Costa County, California.



In the Fall of 2015, Curtin Maritime dredged a combined 170,000 cubic yards from the Pinole Shoal Navigational Channel and Suisun Bay in Contra Costa County, California.

Battling strong currents and constantly changing weather conditions, as well as fabricating a custom drag beam to ensure a consistent grade; our dredge crew innovated, adapted, and persevered to make the Pinole Shoal and Suisun Bay dredge projects another success.

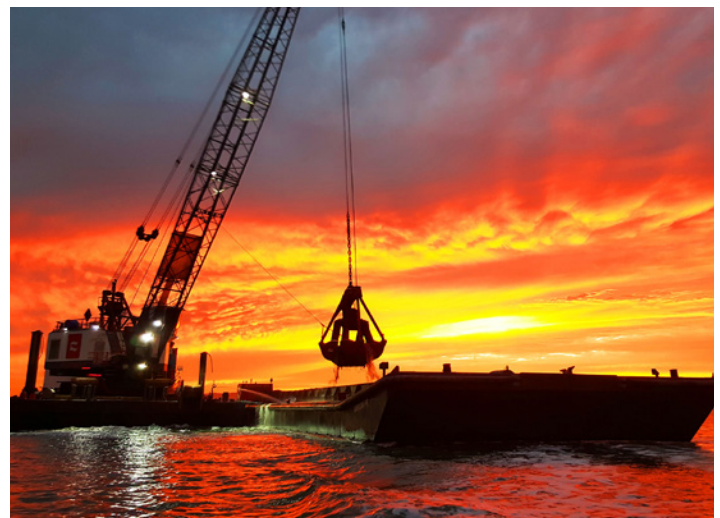
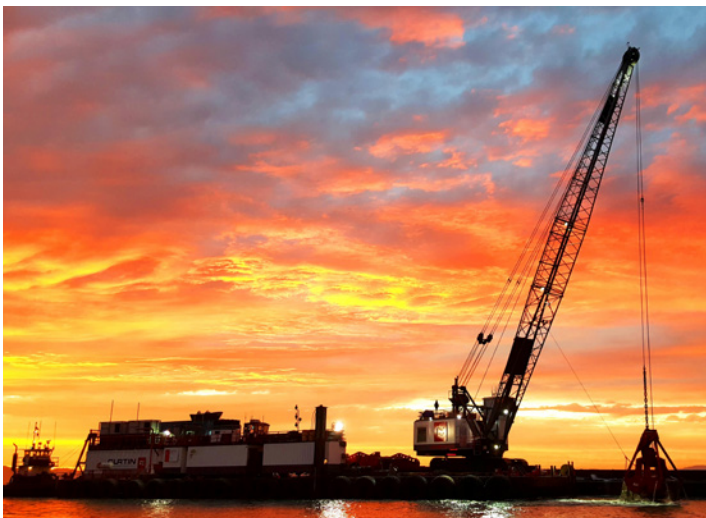
US Army Corps of Engineer's Contract Evaluation Snippet's:

MANAGEMENT: Contractor personnel always made themselves available and cooperated extremely well to keep the project moving forward when critical problems/decisions arose. Contractor personnel was competent and knowledgeable. Contractor maintained

professionalism throughout the project by adhering to the scope of the project. Contractor personnel was well organized.

SAFETY: Safety performance was flawless. The contractor submitted an excellent safety plan and adhered to it.

Pinhole Maintenance Dredging



Key's to the project

- Shifting sands create critical dependency on cutting-edge positioning and hydrographic data equipment, and crew execution on complex barge maneuvering.
- Designed and fabricated drag-beam to smooth out constantly evolving sand waves to meet project grade.
- Strong currents up to 4 knots created unique project challenges on maintain floating equipment on location