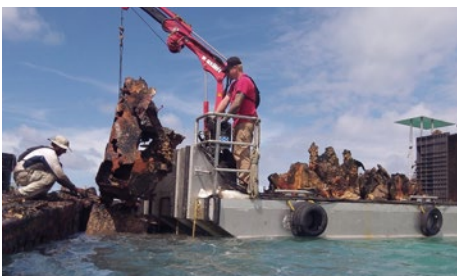


Power Scow

Power Scow : 22' X 10'

Official Number : N/A

IMO Number : N/A



Specifications :

Year- N/A
Builder- Curtin Maritime
Rebuilt- N/A
Length- 22'
Beam- 10ft
Draft- N/A
Registration- N/A
Radio Call Sign- N/A
MMSI-
Certification-

Deck load capacity: 8 tons
Crane: 1.5 ton knuckle boom.
Power: 90hp Yamaha

22'X10' Flat Deck Boat with Crane and Push Knees 8 ton Capacity.

This small power scow is the perfect platform for moving big loads, in harbor diving and a multitude of other uses.