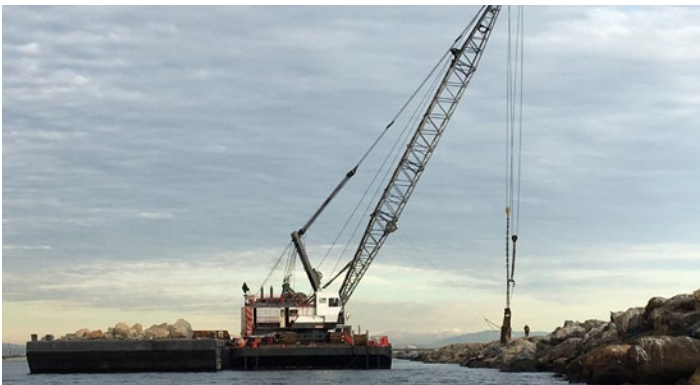
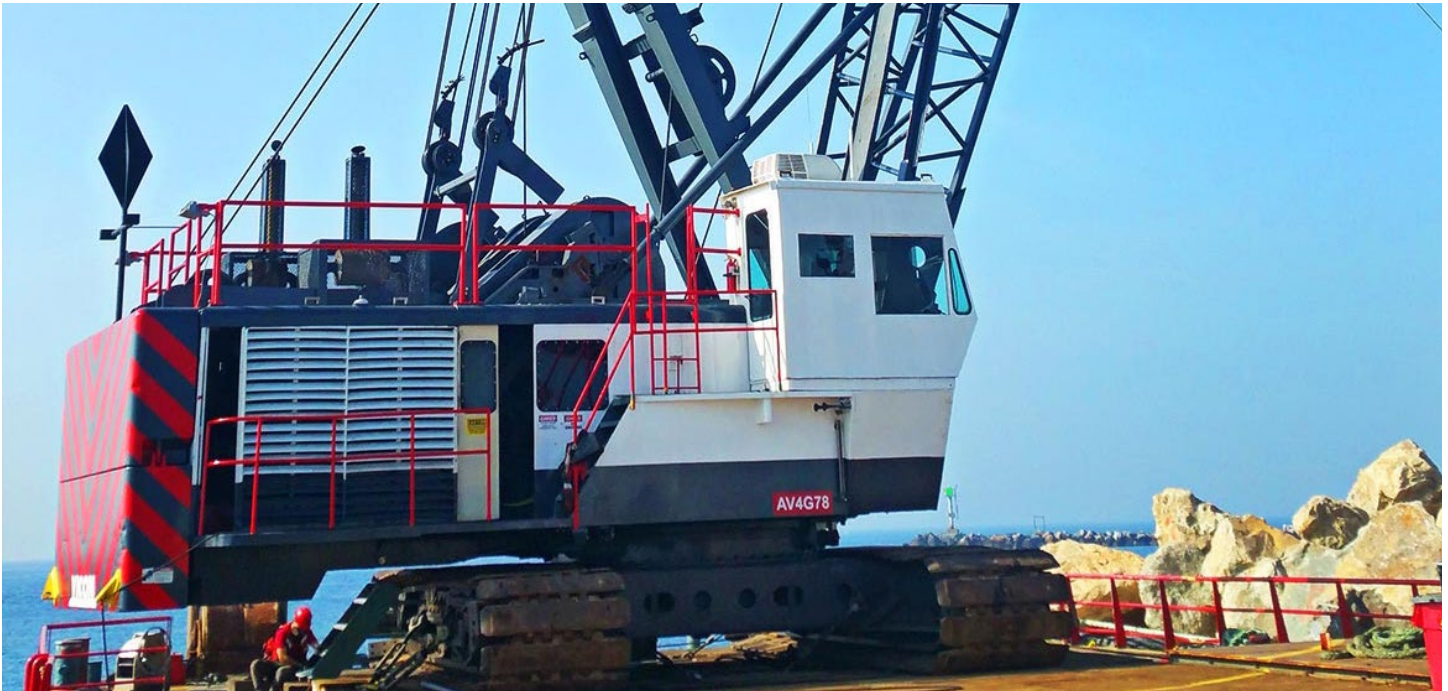


# Manitowoc 4600 Series

Derrick Crane : 140' Boom

Official Number : N/A

IMO Number : N/A



## Specifications :

**VESSEL NAME:** Manitowoc 4600 Series 3 Crane

**DIMENSIONS:** N/A

**BUILT:** 1967

**REBUILT:** N/A

**MAIN ENGINES:** (1) Detroit 12 V-71, (1) Detroit 8 V-71

**HORSEPOWER:** N/A

**TIER RATING:** 0

**BOOM LENGTH (STANDARD CONFIGURATION):** 140'

**GENERATOR:** N/A

**MAX CAPACITY:** 480,000 lbs

**LINE PULL:** 55,000 lbs

@ 27' Radius- 254,600 lbs

@ 140' Radius- 23,500 lbs

**LIFTING LINES:** 2

**MAIN DRUM HOIST WIRE:** 1-1/4"

**AUXILIARY DRUM HOIST WIRE:** 1-3/8"

**BOOM HOIST DRUM WIRE:** 1"

Derrick Crane : **Manitowoc 4600 Series 3 Crane**

## Specifications :

### General

**Year-** 1967  
**Model-** 4600 Series 3  
**Builder-** Manitowoc  
**Rebuilt-** N/A  
**Type-** Conventional Duty Cycle

**Main Engine-** (1) Detroit 12 V-71  
(1)Detroit 8 V-71

**Tier Rating-** 0

**Engine Monitoring-** Gauges

**Torque Converter-**

(2) Twin Disc Vicon 10,000 Series

(1)Twin Disc Vicon 11,000 Series

**Generator –** N/A

**Generator Capacity-** N/A

**Generator Output-** N/A

**Tier Rating-**N/A

**Air Compressor-** Quincy 350-A

**Fuel Capacity-** 600 Gallons

**Hydraulic Pumps-**N/A

### Controls

**Main Controls-** Air

**Hoist-** Air

**Brake-** Air

**Swing-** Air

### Electronics

**Tagline Winch-** Rudomatic 4-Barrel

**Lighting-** N/A

### Specifications

**Distance from Deck to Boom Heel-** 8'

**Boom Length to Heel Pin-** 140'

**Boom Length (Standard Configuration)-** 140'

**Lifting Lines-** 2

**Main Drum Hoist Wire-** 1-1/4"

**Auxiliary Drum Hoist Wire-** 1-3/8"

**Boom Hoist Drum Wire-** 1"

### Capacities

**Maximum Capacity-** 480,000 lbs

**Line Pull-** 55,000 lbs

**@ 27' Radius-** 254,600 lbs

**@ 140' Radius-** 23,500 lbs