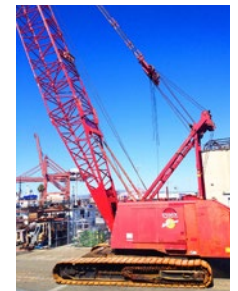


Manitowoc 4000 W

Derrick Crane : 140' Boom

Official Number : N/A

IMO Number : N/A



Specifications :

VESSEL NAME: Manitowoc 4000W Crane

DIMENSIONS: N/A

BUILT: 1971

REBUILT: N/A

MAIN ENGINES: Cummins QSM-11

HORSEPOWER: 350 HP

TIER RATING: 3

BOOM LENGTH (STANDARD CONFIGURATION): 140'

GENERATOR: N/A

MAX CAPACITY: 350,000 lbs

LINE PULL: 28,500 lbs

@ 26' RADIUS: 157,000 lbs

@ 135' RADIUS: 12,700 lbs

LIFTING LINES: 2

MAIN DRUM HOIST WIRE: 1-1/8"

AUXILIARY DRUM HOIST WIRE: 1-1/8"

BOOM HOIST DRUM WIRE: 7/8"

Derrick Crane : **Manitowoc 4000W**

Specifications :

GENERAL

Year : 1971
Model- 4000W
Builder- Manitowoc
Rebuilt- N/A
Type- Conventional Lift

MACHINERY

Main Engine- Cummins QSM-11
Horsepower- 350 HP
Tier Rating- 3
Engine Monitoring-
 Murphy Digital Display
Torque Converter-
 (2) Vicon Twin Disc F-10027
Generator- N/A
Generator Capacity- N/A
Generator Output- N/A
Tier Rating- N/A
Air Compressor-
Fuel Capacity- 300 Gallon
Hydraulic Pumps- N/A

CONTROLS

Main Controls- Air
Hoist- Air
Brake- Air
Swing- Air

ELECTRONICS

VHF- Icom M-36 W/ Headset
Computer- N/A
Camera- N/A
Load Moment Indicator-
 LSI Robway GS550
Climate Control- N/A

EQUIPMENT

Tagline Winch- N/A
Lighting- N/A

SPECIFICATIONS

Distance from Deck to Boom Heel-
Boom Length to Heel Pin- 140'
Boom Length (Standard Configuration)- 140'
Lifting Lines- 2
Main Drum Hoist Wire- 1-1/8"
Auxiliary Drum Hoist Wire- 1-1/8"
Boom Hoist Drum Wire- 7/8"

CAPACITIES

Maximum Capacity- 350,000 lbs
Line Pull- 28,500 lbs
@ 26' Radius- 157,000 lbs
@ 135' Radius- 12,700 lbs

